



PALLAVI MODEL SCHOOL

BODUPPAL

www.pallavimodelschools.org | 1800 212 111111



Empowering Young Minds Towards Excellence



Let Them

Explore & Unfold



Content

Inception	04
Our Vision & Mission	05
Pallavi's Approach	06
Leadership Messages	07
Academics	16
Pre - Primary School	21
Primary School	22
Middle School	23
ESL & Transport	24
Annual Evaluation Report	25
Performing Arts	26
Sports	27
Life at school	28
Campus Highlights	30
Recent Events	32
Guest Visits	33
Awards & Accreditations	35
Pallavi Parent App	35

Inception

With a vision to nurture young learners into responsible and confident citizens, Pallavi Model School, Boduppal, was established under the Pallavi Educational Society. Since its inception in 1994, Pallavi schools have been known for their strong academic foundation, value-based learning, and holistic development. Today, Pallavi stands tall with multiple branches in Bowenpally, Alwal, Gandipet, SaroorNagar, Tivoli (Secunderabad), Keesara, Bachupally, Pocharam, Sagar Road, Tirumulgiri, Thumukunta, Gowdvali and the Boduppal campus continues this legacy by offering world-class education integrated with co-curricular and extra-curricular opportunities.





Vision

Pallavi group of educational institutions envisage creating socially responsible ethical, global leaders with academic excellence and quest for perpetual learning.



Mission

To impart holistic learning in a safe, secure and joyful learning environment. Where respect, tolerance, honesty and individual differences are appreciated. To develop leaders who shape the world through independent, creative and critical thinking.

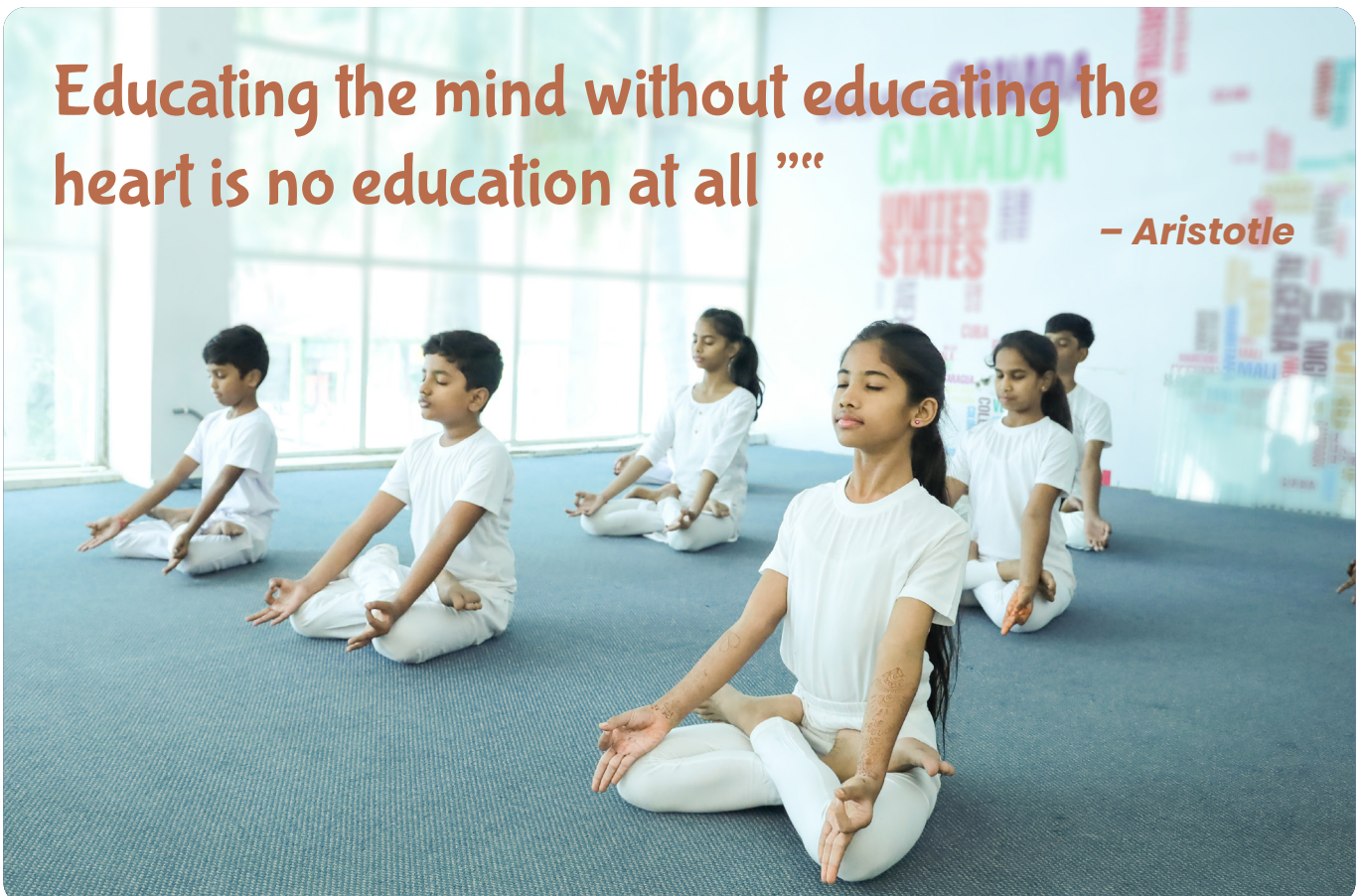


Motto

Tamasoma Jyotirgamaya – Lead me from darkness to light, from ignorance to intelligence.

Educating the mind without educating the heart is no education at all ””

– Aristotle



Pallavi's Approach

"The mediocre teacher tells. The good teacher explains. The superior teacher demonstrates. The great teacher inspires."

-William Arthur Ward



At Pallavi, learning is child-centric, inquiry-based, and skill-oriented. Our focus is on nurturing curiosity, creativity, and character. With the CBSE curriculum at the core, we emphasize experiential learning, integration of technology, and value education. We believe that academic excellence goes hand-in-hand with sports, arts, and life skills, preparing students for the challenges of the 21st century.

Philosophy

We at Pallavi have an approach which aims at establishing the highest standards in academics, sports and co-curricular activities. The school aim's at preparing children with skills necessary for the 21st century. The culture of green and being empathetic run through every nerve and spine of a Pallavi child. The teachers at Pallavi become facilitators in the transfer of knowledge and shaping the young minds to dream higher.



Mr. M. Komaraiah

Chairman

At Pallavi, we had determined to build an education system that is ready to adopt new technology, thus ensuring young people to get fully equipped for future. Pallavi Model School, since its inception in 1994, has always strived in imparting quality education to young children entering its portals.

Accepting the challenges and working tirelessly towards the goal has been the motto. The school has earned a name for itself in curricular and co-curricular activities. We are sure that Pallavi Model School will continue to work with the same spirit and gusto to leap towards a better and brighter future.

Mr. Raja Mogili A

Vice Chairman



As part of the Pallavi Group legacy, our school is a thriving community where students, parents, teachers, and staff collaboratively shape a positive, inclusive environment. Embracing diversity, we celebrate individual talents, creating a dynamic learning experience.

Academic excellence is central, with an engaging curriculum challenging students at all levels. Our committed educators employ innovative methods, fostering critical thinking, creativity, and problem-solving skills through advanced technologies.



Mrs. Pallavi Malka

Vice Chairman

"All knowledge that the world has ever received comes from the mind and the infinite library of the universe is in your mind!"

– Swami Vivekananda

Very true. We, at Pallavi believe that every student that comes in has immense potential. We believe teaching is a noble profession and we are on the mission of nurturing tender minds with novel and innovative ideas, thus achieving the desired success.



Mr. A Sushil Kumar

Director & General Secretary

With a motto to create exceptional students who in turn make an amazing society to live in, Pallavi Model School spread its wings to Boduppall in a 6-acre campus Affiliated to CBSE. The school believes in imparting life skills which is the current need of the hour. We also focus on nurturing the natural ability whether it is artistic, analytical, scientific, or linguistic. Our long-term goal will be to provide a robust, Vibrant, and holistic education with appropriate approaches to academic activities to provide stress-free, child-centered education that will develop competent, confident, and enterprising citizens who will promote harmony and peace.



Mr. Malka Yasasvi

CEO & Director

We aim to cultivate versatile individuals prepared for success in the 21st century. Beyond academics, we emphasize character growth through diverse extracurriculars like sports, arts, clubs, and community service. These activities empower students to explore, lead, and form lasting connections. We urge students to embrace challenges, fostering a passion-driven approach. Recognizing parents' pivotal role, we prioritize open communication and active involvement, fostering a collaborative partnership for an enriched educational journey at PIS, Bachupally.



Dr. T. Sudha

Executive Director

Pallavi as a brand has always stood for being a place that ties together both tradition and change. While tradition keeps us grounded and rooted, change is inevitable and is the way of the world. Pallavi brand has worked tirelessly for 30 years to provide holistic education to every child walking through its doors. What started as a small dream in a campus at Bowenpally is now a dream institution helping thousands of children to discover who they really are.

All of this wouldn't have been possible without the constant support and visionary thinking of our Chairman Mr. Komariah. His journey is truly an inspiring one, As a young engineer he wanted to make a difference and embarked on a journey to reform the education system. He set off on a quest to understand the teaching methods in various countries and over the years has applied these teachings in his multiple schools. The Pallavi brand now has Seven international schools, a chain of model schools and Pallavi kidz. We are extremely proud of the kind of leaders and teachers that are part of our schools. They are truly our lifeline. While we follow a standard CBSE curriculum across all campuses, we integrate it with collaborations and material from across the world to give the best learning environment to children. Our campuses are carefully planned and provide a variety of extracurricular activities, thus facilitating holistic education. Pallavians are given unparalleled opportunities and experiences that they will cherish throughout their life.

Our hope is that each Pallavian stands up as a strong human and creates a legacy of his/her own.

Our alumni are well placed in life and are now doctors, engineers, fashion designers, dancers, defense personnel, professionals from unsung and not too common careers thus depicting our unique environment. We thank every single person who has been a part of our 30-year legacy and hope that the rest of Pallavi's journey is also filled with growth, love, light, and learning. Our 30-year journey doesn't make us complacent, it rather motivates us to make some exciting changes for the future.

In honoring the past, we energize the future and celebrate the present.



Principal

At Pallavi Model School Boduppal, we firmly believe in fostering an inclusive community where every student is valued and encouraged to achieve their full potential. Through a rich and diverse curriculum, we aim to inspire a love for learning and to equip our students with the knowledge and capabilities to excel in an ever-changing world. Furthermore, our commitment to character education and the promotion of values such as respect, integrity, and responsibility sets the foundation for a positive and respectful school culture.

As we embark on this academic journey together, I encourage you to engage with the school community and take advantage of the many opportunities available to you. Whether it's through participation in extracurricular activities, involvement in community service initiatives, or active engagement with our dedicated faculty, we believe that every student has the potential to make a meaningful contribution to our school and society at large.

I am confident that with our collective efforts, we will continue to uphold the traditions of excellence and honor that define Pallavians to become responsible, compassionate, and well-rounded individuals who are ready to embrace the challenges of the future.

I am excited for the year ahead and look forward to get associated with you. Thank you.

Warm Regards,
Principal

Pallavi Standards

- Strong academic curriculum.
- Optimum student – teacher ratio.
- Inquiry-based and activity-oriented learning.
- Integration of sports and performing arts into daily routine.
- Emphasis on values, empathy, and environmental care
- Clubs & student exchange programs as part of school curriculum.
- Opportunities through clubs, competitions, and student exchange programs
- Strong parent-school partnership



New Initiatives.

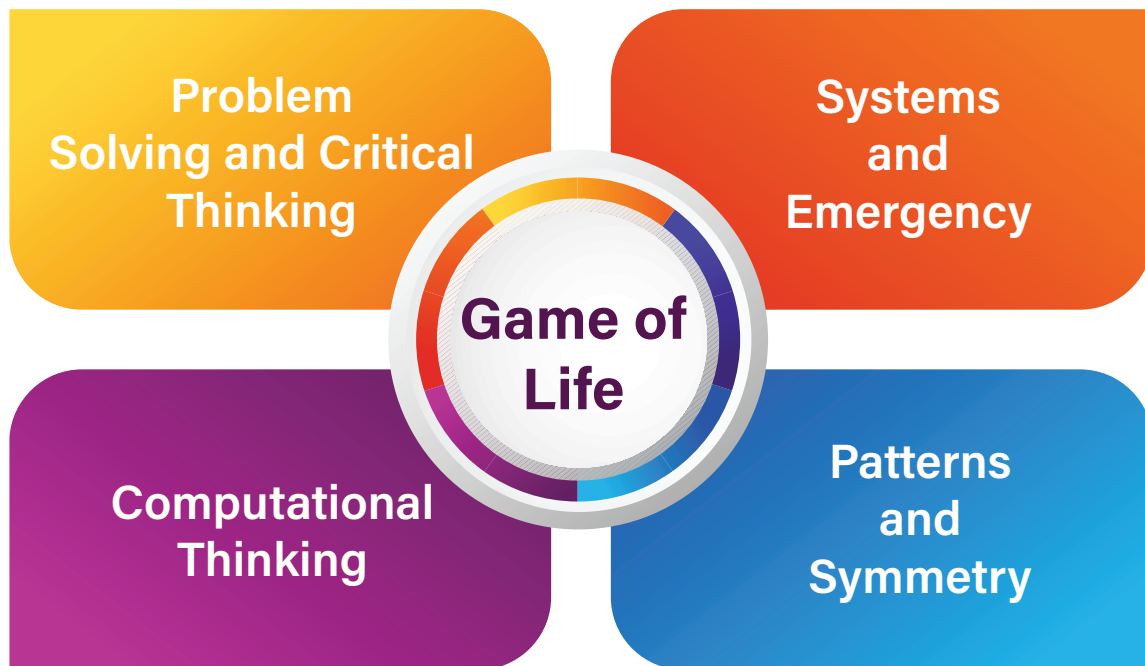
1. Inculcating Vedic values in teachers through teacher training modules which is an ongoing training for all the teachers.
2. **Project Sahyog:** Project Sahyog is a Community driven initiative aimed at fostering social cohesion, empowerment and sustainable development within society. The primary objective of project of Sahyog is to encourage active participation and engagement of individuals, organizations and institutions to work collectively towards the betterment of Society. The Key features of project-Sahyog include



Through its multi-pronged approach Project Sahyog strives to create a Society where individuals are empowered, Communities are thriving and sustainable development is prioritized.

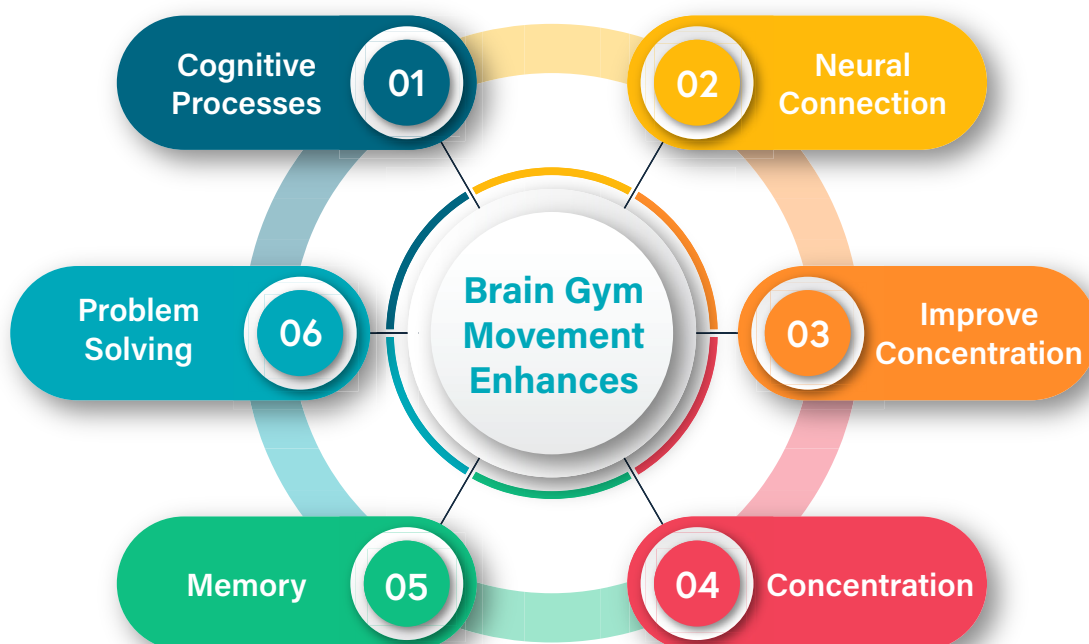
3. The Game of life: A practical approach to learning in Middle school.

The game of life provides an engaging and interactive way for middle school students to explore concepts related to systems, patterns and computational thinking while fostering creativity and problem-solving skills

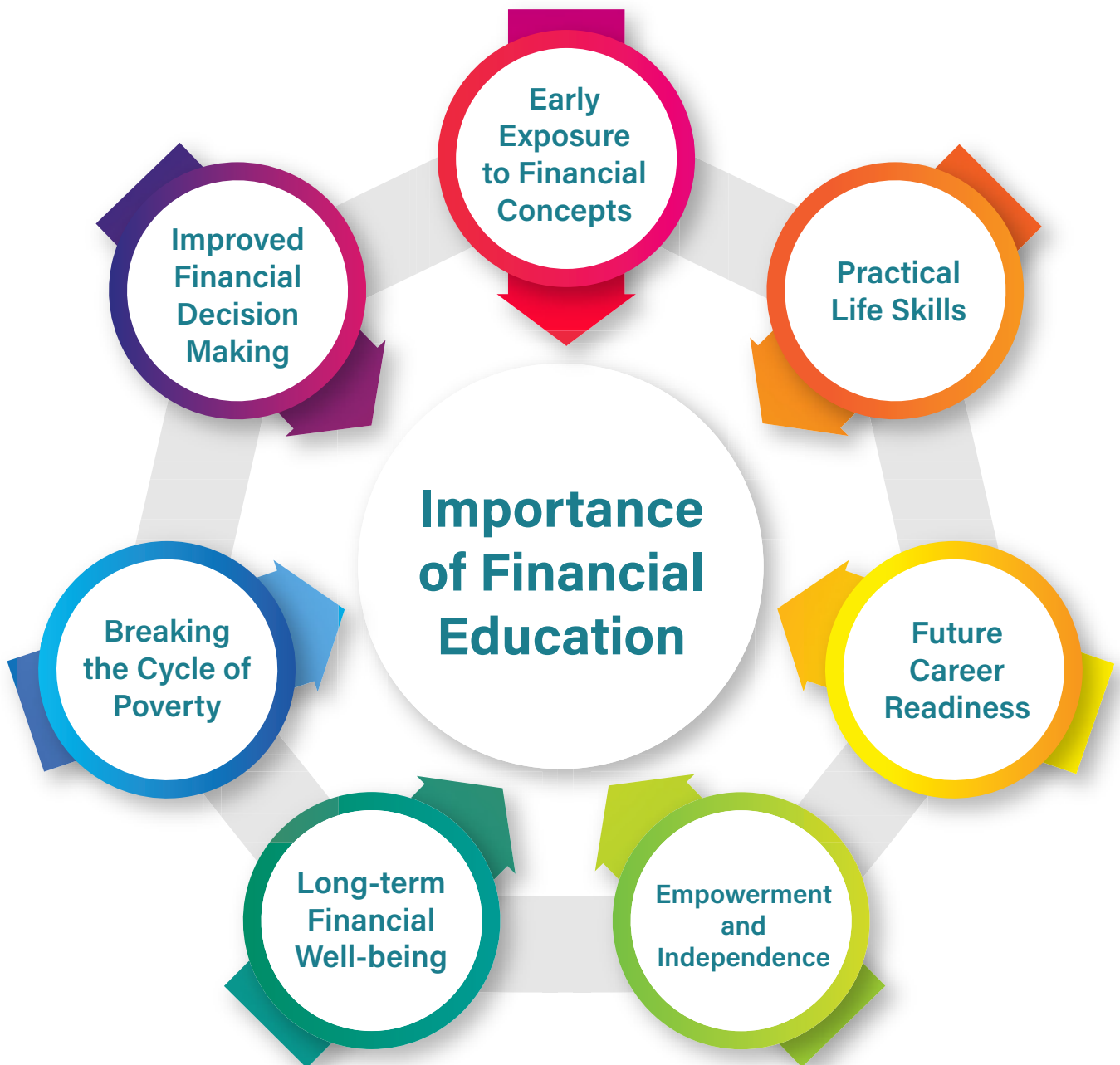


4. Teacher well-being: At Pallavi we believe that Teacher well-being is crucial for the education. Teacher retention, role modeling, mental health support, professional growth, and fostering a positive school culture.

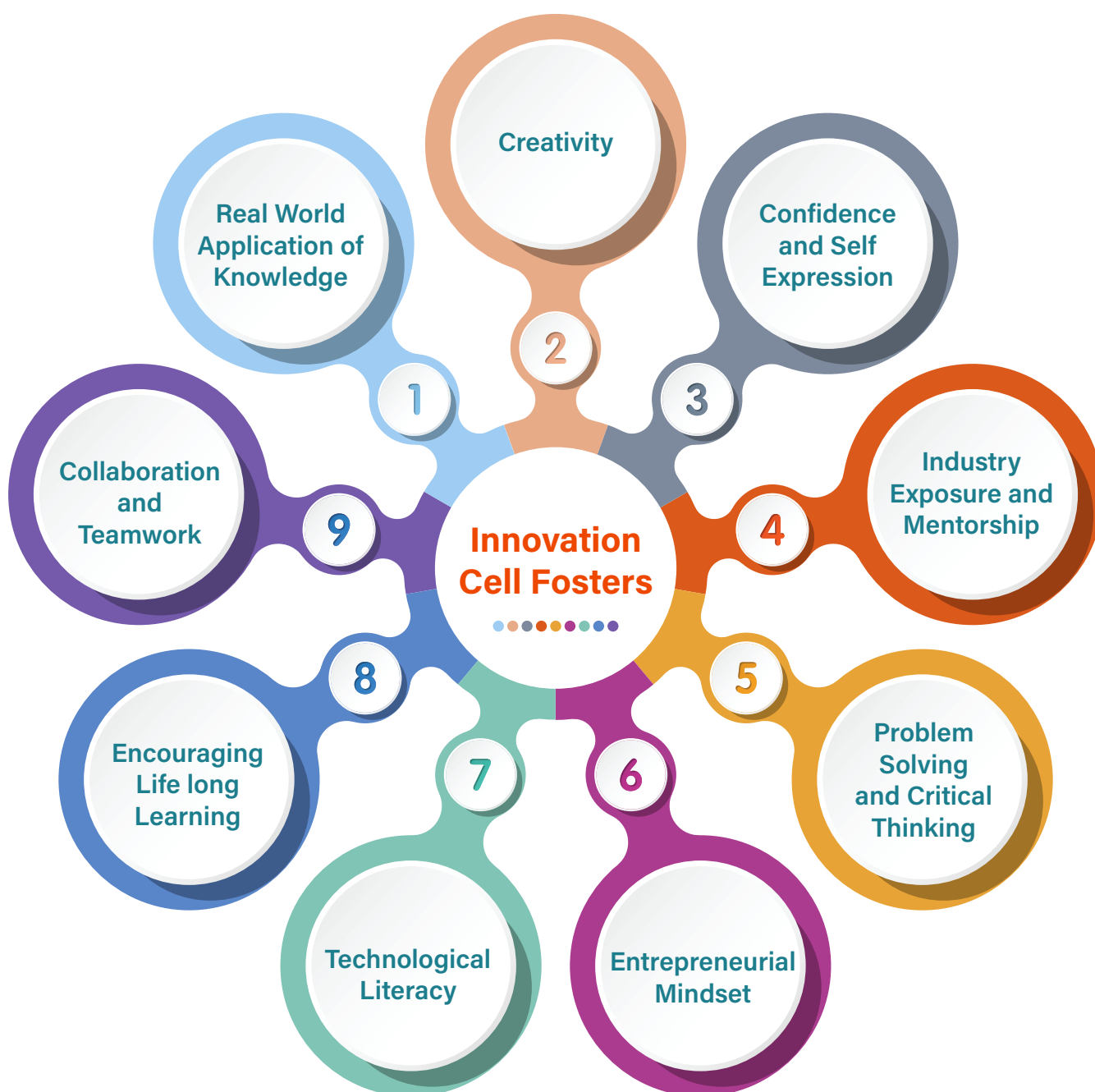
5. Brain Gym: Brain Gym is an educational program that focuses on movement-based activities to enhance learning and Cognitive functioning.



6. Financial Literacy program: Introducing a financial literacy club in middle school can have a significant positive impact on students' lives by providing them with the necessary tools to navigate the complex world of personal finance and achieve financial well-being.



7. Innovation cell: Innovation cell in schools provide a structured and supportive environment for students to develop essential skills, explore their interests and cultivate an innovative mindset. They prepare students for future challenges, equip them with relevant skills for the modern world and empower them to become active contributors to society.



Academics

Our academic program is designed as per **CBSE guidelines**. The curriculum promotes conceptual clarity, practical application, and critical thinking. Equipped with well-structured laboratories, digital classrooms, and a resource-rich library, Pallavi ensures that students engage in active learning.

- **Biology Lab**

- **Chemistry Lab**

- **Physics Lab**

- **Math Lab**

- **ICT Lab & Robotics**

- **Library with a wide range of resources**



Curriculum

We are committed to impart best academic curriculum, so in order to transact effectively the syllabus chosen adopts best practices of both national and International curriculum.

Testing and examination can be oral, written or both... The system of continuous assessment is designed to ensure that every student takes responsibility for his/her learning.





Early Years Programme (Pre-Primary)

Our Kindergarten curriculum blends play-based learning with skill development in language, numeracy, motor skills, and creativity. Through stories, rhymes, outdoor activities, and thematic projects, young learners build a strong foundation for formal schooling.





Pre - Primary

The pre - primary program at Pallavi aims at development in the language, physical, creative and cognitive domains in its three year course. The classrooms are colorful and resemble a second home. The teacher plays the role of a facilitator making learning easy for the tiny ones. A strong emphasis is laid on skill development right from this age. Field trips, outdoor activities, the play area and the toy room are designed to further nurture the child in the happy preschool arena.

Teaching the future

The programme goals are aimed at the following developmental domains.

➔ Personal, Social, Emotional Development

➔ Mathematical Development

➔ Creative Development

➔ Language Development

➔ Physical Development

➔ Knowledge and understanding of the world around them

➔ Cognitive Development

Primary School

CLASSES (I TO V)

The primary curriculum emphasizes languages, mathematics, science, and social studies, integrated with life skills and value education. Activity-based teaching, projects, and celebrations help children relate classroom learning to real-life experiences.

- Discipline
- English language
- Mathematics
- Sciences
- Fine arts
- Physical education

“ Don't limit a child to your own learning, for he was born in another time ”

- Rabindranath Tagore



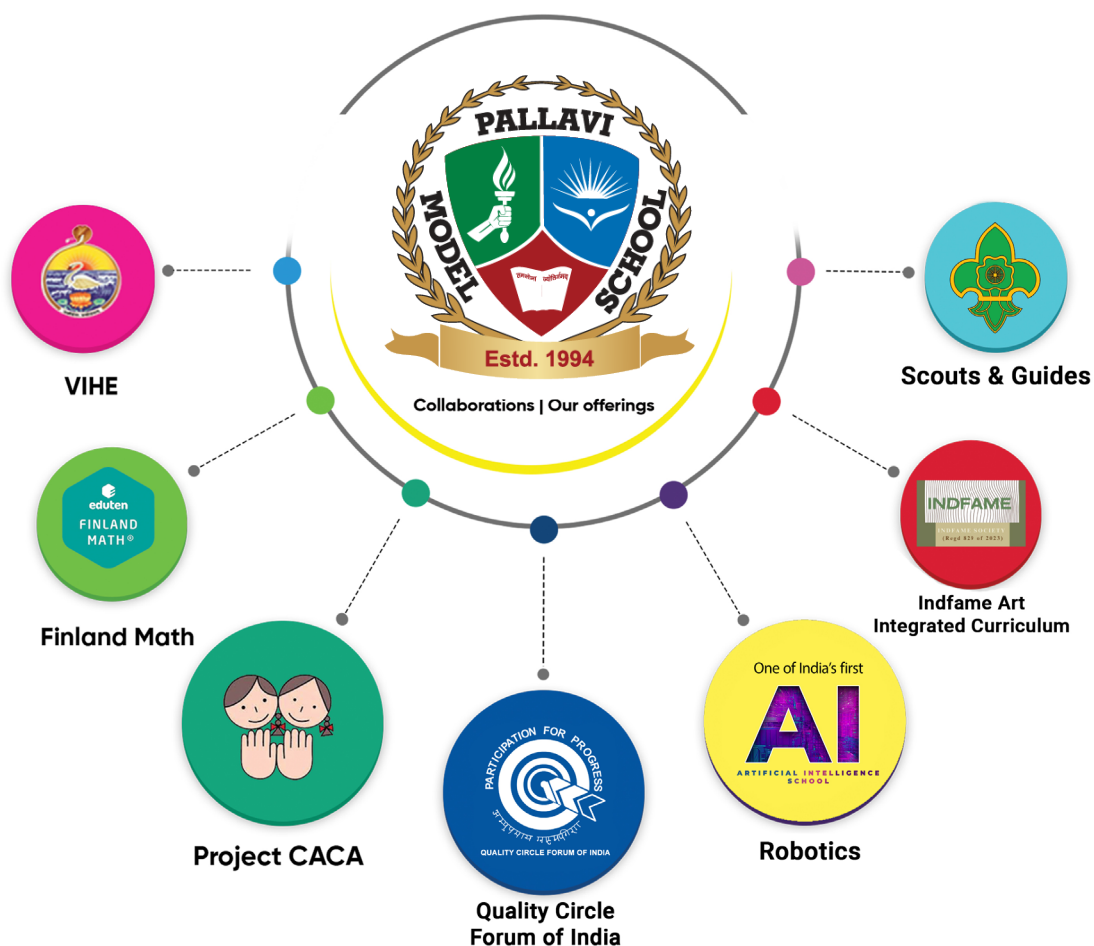
Middle & Secondary School

CLASSES (VI & X)

The CBSE curriculum in middle and secondary levels develops inquiry, research, and problem-solving skills. Students are encouraged to engage in debates, group discussions, projects, and leadership programs. Focus is also placed on preparing students for board examinations and competitive exams.



Collaborations



English & Life Skills Lab (ELSL)

The ELSL program enhances communication, collaboration, creativity, and confidence. Through activities like role play, show-and-tell, storytelling, and guided reading, students master Listening, Speaking, Reading, and Writing (LSRW) skills.



Successful Alumni

Students graduating from Pallavi come out with flying colours every year in CBSE, inter-school, state as well as national level competitive exams and extracurricular activities. The e-Community alumni directory also provides an excellent place to find and connect with everyone, working in different states and various countries through out the globe where each one will be beneficial to other.

Transport



High quality GPS enabled bus provision carries a large number of day scholars to the school from all major areas. Each bus has a bus attendant and a teacher travelling along with the students.

Annual Evaluation Report

Student progress is measured through continuous assessments, projects, and assessments. Teachers adopt differentiated strategies to cater to varied learning needs. Reports highlight not only academic growth but also skills in creativity, critical thinking, and collaboration.

- Student-centered learning
- Assessment for learning
- Standards, project, inquiry-based learning
- Differentiation
- Student engagement

Fostering the spirit of Internationalism



Performing arts

Expression in any form be it in sports, music, and dance or in the art room is encouraged at Pallavi. Children are encouraged to participate in all activities conducted in school. The curriculum trains the children in the following areas.

Children are trained in:

- Music (Indian & Western)
- Dance (Classical & Contemporary)
- Art & Craft
- Theatre
- Visual Art



Sports

We believe sports build discipline and teamwork. Pallavi students receive coaching in:

- Cricket
- Football
- Basketball
- Skating
- Swimming
- Taekwondo
- Table Tennis
- Athletics and more.



Life at Pallavi Boduppal

- Wi-Fi enabled smart classrooms
- Well-stocked library
- CBSE Trained Faculty
- Counselling & Guidance sessions by certified wellness counsellor
- Spacious playgrounds and sports arenas
- Loving and Caring Atmosphere
- Life skills and value-based education
- Excellent Sports facilities
- Well-equipped Laboratories
- Pallavi Connect Mobile App for parents





School Campus Photos

6
Acres





Special Events & Celebrations



Festivals, annual functions, science fairs, literary weeks, cultural shows, and international exposure programs form an integral part of school life. Students participate in inter-school competitions, social outreach programs, and environmental initiatives, fostering confidence and responsibility.

PRO KABADDI

Inaugural of Pallavi Pro-Kabaddi Academy by honourable minister Shri Jagadish Reddy and our chairman Shri Malka Komaraiah along with Star Sports Pro Kabaddi players Deepak Hooda, Rahul Choudary, Pradeep Narwal, Nitin Tomar and Rahul Chowdary



ACT OF KINDNESS

Mega Charity Drive - Act of Kindness by students of Pallavi International School and Delhi Public School, Nadergul in collaboration with HMTV to 20 orphanages which was graced by actor Tarun



Guest Visits

WE ARE PROUD TO RECEIVE Indian Green Building Council AWARD , AT CII - HARITHA HARAM AWARDS 2022 PRESENTED BY HONOURABLE MINISTER MR. K.T.RAMA RAO



TIMES EDUCATION EXCELLENCE



RECEIVED BEST EDUCATION IN PRACTICE IN HYDERABAD, BY TIMES GROUP



5K/10K Run to save environment



Mr. Akhil Akkineni
Indian Actor

Football Premier League



Mr. Naga Chaitanya
Indian Actor

Pie Day Celebrations



Shri Chukka Ramaiah
Educator, Activist, Legislator

National Fistball Championship



Shri T. Padma Rao Goud
Sports & Exercise Minister

Guest Visits

Science Exhibition Celebrations



Shri A P J Abdul Kalam
Ex - President of India

National Education Policy-Book Launch



Dr. Jaya Prakash Narayana
Indian Liberal Politician, Activist and a Former Public Administrator

Annual Day Celebrations



Shri Bandaru Dattatreya
Minister of Labour & Employment

Mountaineer Club Launch



V. V. Lakshminarayana
Indian Politician and Retired Indian Police Service Officer

Sports Day Celebrations



Ms. Mithali Raj
Captain of Indian Women's cricket team

NIIT Math Lab inauguration



Viswanathan Anand
Indian Chess Grandmaster

Best Education Institution Award



Shri Sujana Chowdary
Minister of Science,
Technology & Earth Sciences

Shri T. Harish Rao
Minister for Irrigation,
Marketing & Legislative Affairs

Football Cluster VII



Shri P. Mahender Reddy
Minister of Telangana Transport Department

Awards

Pallavi Model School has received numerous awards for excellence in academics, sports, innovation, and community service. Our students have consistently excelled in CBSE board results, inter-school competitions, and cultural events.



Pallavi Parent App

An intuitive iOS & Android Application

An intuitive mobile application for parents to stay updated with academics, attendance, activities, fees, transport tracking, and event galleries – ensuring transparency and real-time communication.

Features:

- Academics – View timetable, syllabus, homework, classwork, progress reports, and exam results.
- Attendance – Real-time updates on student presence/absence with instant notifications.
- Activities – Information on co-curricular and extra-curricular programs, achievements, and schedules.
- Fees Management – Secure online fee payment, receipts, due reminders, and transaction history.
- Transport Tracking – Live bus tracking with pick-up/drop updates and safety alerts.
- Event Galleries – Photos and videos from school events, competitions, and celebrations.
- Instant Notifications – Important circulars, announcements, and reminders directly on the app.
- Parent-Teacher Communication – Easy messaging and feedback channels for better collaboration.
- Performance Insights – Graphical dashboards to track academic progress and overall development
and many more..



Our Branches

PALLAVI MODEL SCHOOL BOWENPALLY

703 299 3299, 879 074 0044
admissions_bwp@pallavimodelschools.org
CBSE: Nursery to Grade XII

PALLAVI MODEL SCHOOL ALWAL

728 609 4427, 939 695 6471
admissions_alwal@pallavimodelschools.org
CBSE: Nursery to Grade XII

PALLAVI MODEL SCHOOL BODUPPAL

766 000 2469, 766 000 4977
admissions_bdpl@pallavimodelschools.org
CBSE: Nursery to Grade X

PALLAVI INTERNATIONAL SCHOOL GANDIPET

+91 709 333 1170
admissions.gandipet@pallavimodelschools.org
CBSE: Grade I to XII
CAMBRIDGE: Early Years to Grade VIII

PALLAVI INTERNATIONAL SCHOOL BACHUPALLY

767 090 7770, 767 090 7771
admissions_bachupally@pallavimodelschools.org
CBSE: Grade VI to IX
CAMBRIDGE: Early Years to Grade IX

AKSHARA VAAGDEVI INTERNATIONAL SCHOOL, SECUNDERABAD

957 346 9759, 912 105 5434
admissions@avinternationalschools.org
CBSE: Nursery to Grade X

PALLAVI INTERNATIONAL SCHOOL KEESARA

766 000 2459, 766 000 2460
admissions_keesara@pallavimodelschools.org
CBSE: Nursery to Grade X

PALLAVI INTERNATIONAL SCHOOL SAGAR ROAD

8897021999, 8374290999
admissions_sagarroad@pallavimodelschools.org
CBSE: Nursery to Grade IX

PALLAVI AWARE SCHOOL SAROORNAGAR

+91 910 018 8822
infopais@pallavimodelschools.org
CBSE: Nursery to Grade X

PALLAVI INTERNATIONAL SCHOOL SINGAPORE TOWNSHIP (POCHARAM)

7670 900 380, 7670 900 390
admissions_pocharam@pallavimodelschools.org
CBSE: Grade I to VIII
CAMBRIDGE: Early Years to Grade VI

PALLAVI INTERNATIONAL SCHOOL GOWDAVALLI

928 109 4854
admissions_gowdavalli@pallavimodelschools.org
CBSE: Grade I to V
CAMBRIDGE: Early Years to Grade III

PALLAVI MODEL SCHOOL TIRUMALAGIRI

7288 820 006
admissions_tmlg@pallavimodelschools.org
CBSE: Nursery to Grade VIII

PALLAVI INTERNATIONAL SCHOOL THUMUKUNTA

80 1919 6363
admissions_thumukunta@pallaviinternationalschool.com
CBSE: Nursery to Grade VIII



Habsiguda
7660 004 966

AS Rao Nagar
7032 993 307

Tarnaka
7660 000 396

Alwal
89777 55335